

SINGAPORE CAR SERVICES

AUTO LEASING · CAR RENTAL · CHAUFFEUR SERVICE
AIRPORT TRANSFER · BUS SERVICE · ARMORED VEHICLES

TAILORED FOR INTERNATIONAL EMPLOYEES

ExpatRide coordinates car service needs across 176 countries with our global support teams and billing service. We have offices across three continents including Miami, Manila, Copenhagen and Prague.

GLOBAL TRANSPORTATION STRATEGY

With a list of corporate locations, we'll put together a transportation plan covering our services in each location.

CENTRALIZED DIRECT BILLING

We offer our partners and clients direct billing options for most of our services with invoices and local payment options for the following currencies: AUD, EUR, GBP, SGD and USD.

LOWER CO2 EMISSIONS WITH ECORIDE

Reduce emissions by 30% to 80%. The EcoRide Program chooses the eco-friendlier option.

THE PROCESS

All initiations are sent to CARS@ExpatRide.com. A Customer Relations Manager will contact the assignee and make the transportation arrangements as authorized. Our team coordinates with the local suppliers and keeps the relocation consultant informed along the way.

CAR LEASE

No local credit score needed.
From 12 months and up. New and used cars.

CAR RENTAL

Available from Day 1. Most locations with zero deductible.
No long-term commitments.

CHAUFFEUR SERVICE

Daily, weekly, monthly to yearly programs with dedicated drivers. Armored cars available.

AIRPORT TRANSFER

Book hassle-free airport transfers for a convenient and safe arrival after a long flight.

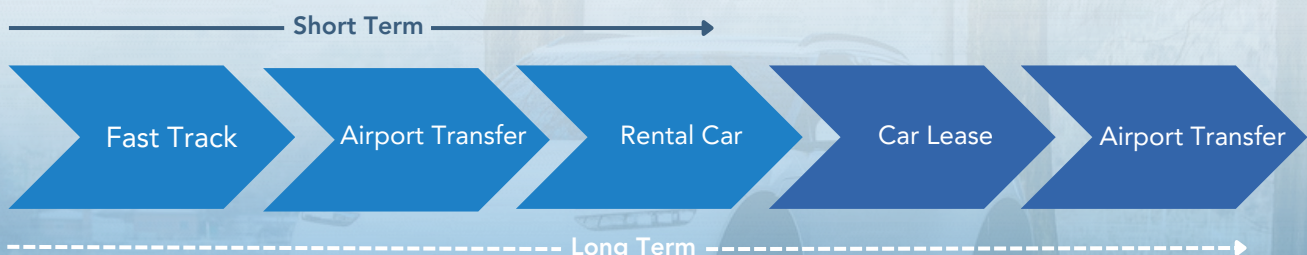
BUS SERVICE

Bus transportation in multiple cities, be it an airport transfer or daily service.

FAST TRACK

Pass through immigration with expedited fast track assistance and custom processing.

EXAMPLES OF SERVICE COMBINATIONS



EXPATRIATES CAN LEASE A CAR WITHOUT A CREDIT HISTORY IN SINGAPORE

ExpatRide provides car leasing for new and used vehicles to individuals without a local credit history. Start the process when the time is right – before or after moving to Singapore.

BILLING OPTIONS

The lease cost can either be billed by ExpatRide to the employer/RMC, or paid for by the assignee directly to our leasing partner.



COMPACT SEDAN

Toyota Axio 1.5

12 months	SGD 2,620
24 months	SGD 2,490
36 months	SGD 2,350



CROSSOVER

Honda Vezel

12 months	SGD 2,880
24 months	SGD 2,750
36 months	SGD 2,490



COMPACT SUV

Toyota C-HR Hybrid

12 months	SGD 3,020
24 months	SGD 2,880
36 months	SGD 2,750



COMPACT PREMIUM

Mercedes-Benz B200

12 months	SGD 4,710
24 months	SGD 4,525
36 months	SGD 4,390



SUV

Toyota Harrier 2.0

12 months	SGD 3,925
24 months	SGD 3,800
36 months	SGD 3,670



7-SEATER MINIVAN

Toyota Estima 2.4

12 months	SGD 4,190
24 months	SGD 3,925
36 months	SGD 3,925

Monthly rates and vehicle options are subject to change.

Estimates include:

- Existing cars in the fleet
- Automatic transmission
- Full comprehensive insurance
- GST
- Unlimited mileage (24,000 km/year for premium cars)
- Maintenance and 24/7 breakdown service
- Direct Billing Service

Notes:

- Vehicles for Singapore and West Malaysia use only
- In the event of an accident, the deductible is SGD 1,500
- One month advance payment is required
- If early return, the remaining months of the lease must be paid



Your assignees' assignments may vary in duration. Car leasing offers the flexibility to choose the lease term that suits specific needs, whether for 12 months or several years. It eliminates the commitment and hassle associated with owning a vehicle and allows the assignee to have a reliable vehicle for their stay, ensuring convenience and mobility.

Wide selection of vehicles:

We offer a wide range of vehicles, catering to various preferences and needs. Whether a compact car for city commuting or a spacious SUV for family adventures is needed, we have the perfect vehicle to match your assignee's lifestyle, requirements, and budget. Our diverse fleet ensures that a car can be selected that aligns with your assignee's comfort, style, and transportation needs.



Sedan



Compact SUV



Minivan

Our lease program offers the following benefits and support:

- Comprehensive insurance coverage for two named drivers
- Maintenance, road tax, and inspection
- Wear and tear parts replacement
- Replacement of vehicle while under maintenance
- 24-hour roadside assistance
- Option to change vehicles, subject to availability

How to get started:

Contact us at CARS@ExpatRide.com or visit www.ExpatRide.com and complete the contact form.

A Personal Car Shopper will assist with sourcing vehicles and tailoring quotes according to your assignee's needs.

Required documents:

Once a vehicle has been chosen, the following documentation will be required:

- Copy of passport
- Copy of valid driver's license
- Letter of employment in Singapore
- Copy of front and back of Employment Pass



Is a Singapore driver's license needed to start the process?

We can work with foreign driver's licenses in English letters, however, please note that these must be converted to a Singapore driver's license within 12 months of arrival.

Do you offer used vehicles for lease?

Yes, we offer both used and new vehicles.

What is the estimated delivery time for a lease car?

Depending on the manufacturer a brand-new car order will take about 2 months, while a used car in stock can be delivered within 1-2 weeks.

What does "insurance deductible" mean?

The Insurance deductible is the driver's maximum insurance liability. This will only be chargeable for car accidents or damage. Charges will not be imposed if an accident or damage does not occur during the rental or lease period.

Can an additional second-named driver be permitted to drive the vehicle?

Yes, ExpatRide provides a complimentary additional second-named driver, provided that their valid driver's license is presented upon booking confirmation. All lease terms and conditions applicable to the primary car lessee will also apply to the additional second-named driver.

What happens if the lease car needs to be returned earlier?

A lease contract in Singapore is a closed-end contract. If the car is returned earlier, the remaining months on the agreed lease term must be paid.

What payment options are there for a lease?

The cost for the lease can either be direct billed by ExpatRide to the employer/RMC or it can be paid for directly by the assignee to our leasing partner.

What services are included in the lease?

- 24-hour breakdown service
- Option to change car when needed
- Parts replacement
- Unlimited mileage for most brands

Do you support HR with their expats' transportation needs?

Yes, we can assist corporate human resource divisions in coordinating all transportation needs for their employees on international assignments.

How can ExpatRide support our corporate relocation service needs?

We work with you to establish a global mobility program for all aspects of car transportation. Aligning customary transportation across continents, budgets, allowances, self-pay, approved vehicles, individually tailored solutions, and centralized direct billing arrangement across all services.

If you work with a Relocation Management Company, we can support and implement the plan mentioned above together with the RMC, including coordinating expense management for your employees, thus utilizing the relocation support services infrastructure already provided to you by the RMC. We work with all the major RMCs and Destination Services Providers.

In Singapore, we offer many different car services. Whether an airport transfer for your travel-weary assignee is needed, a lease for an extended period, or a rental vehicle for a shorter duration, you can trust that our services and well-maintained vehicles will help provide a seamless and smooth transition to their new location.

LEASE NEW & USED CARS

We offer a wide variety of makes and models, including Toyota, Honda, Nissan, Hyundai, Mitsubishi, Mercedes Benz, Audi, BMW, MINI, and Maserati.

CAR RENTAL

Rent any type of vehicle - luxury and budget sedans, exotics, convertibles, coupes, hatchbacks and SUVs. Available for short- and long-term rental.

DAILY CHAUFFEUR SERVICE

Most often the assignee is unfamiliar with the surroundings of a new city. We can offer the convenience of being picked up by a chauffeur and driven safely to the desired locations.

AIRPORT TRANSFER

Book hassle-free airport transfers for a convenient and safe arrival, essential after long relocation travel. ExpatRide's local provider monitors the arriving flight to ensure that pick-up is on time.

BUS SERVICE

Bus transportation works well for group moves, be it as an Airport Transfer, daily shuttle to/from work site, or shopping trips. Bus sizes holding 10-55 passengers.

ARMORED VEHICLES

An armored vehicle is a cost-effective component of an integrated security plan. We offer a range of vehicles and can provide a local Executive Protection Officer (armed and unarmed) or a regular driver.

HOW TO GET STARTED

Please use the following link to request a rental car, airport transfer, or chauffeur service:
www.expatride.com/reservation/

For a car lease, please contact us at CARS@ExpatRide.com or visit www.ExpatRide.com

EcoRide

by ExpatRide

Cars emit carbon dioxide and other greenhouse gases, which contribute to global warming and pollution. Many of our clients and their employees are concerned about the environment and pollution. As a result, they seek ways to lower their CO2 emissions when relocating employees.

Therefore, we at ExpatRide have taken the initiative to reduce our services' carbon footprint while driving demand for greener cars in our suppliers' fleets worldwide.

Our EcoRide Program has three climate impact purpose driven initiatives:

- Vetting of our Global Supplier Network for hybrid or electric vehicles
- Motivating, Assisting and Pushing greener choices
- The "EcoRide Choice" Program

THE ECORIDE PROGRAM



GLOBAL SUPPLIER NETWORK

Prioritized according to their environmentally-friendly fleet of cars and steps to further lower CO2 emissions.



PUSH GREENER CHOICE

We will always present a greener option for our clients to consider. If a hybrid car is priced the same, we will book the greener option.



ECORIDE CHOICE PROGRAM

Mandated by the client, EcoRide Choice is designed to always choose the eco-friendlier option on behalf of the employee.

ExpatRide can lower the client's CO2 emissions by between 30% (hybrid) and 80% (electric) with eco-friendlier options.



50 Gasoline Rental Cars



50 Hybrid Rental Cars



6,700 Trees Saved per Year

The EcoRide Impact - It's easy to make a difference! Switching 50 assignees from gasoline to hybrid rental cars on an annual basis can make a significant environmental impact.

Car rental and car leasing are two different approaches to obtaining a vehicle, each with its own characteristics and purposes. Here's a breakdown of the key differences.

LEASING A CAR

When looking for a long-term solution, leasing usually turns out to be the more economical option, as you only pay for the amount the vehicle is expected to depreciate during the lease term. Leasing starts at 12 or 24 months in most countries. Car leasing is suited for people that want to drive a car over a longer period but do not want to buy the vehicle outright. You do not have to worry about fluctuations in the car's trade-in value or go through the hassle of selling it when it is time to move on.

RENTING A CAR

A flexible rental term starts at one day and can go on for as long as the rental is needed. The duration of a long-term car rental can fit more customized needs, and a change to the vehicle size or duration is easy and free of fees or penalties. Renting a car over a period of several months is ideally suited for employees that work in shorter periods at a certain location.

PROS

CONS

	PROS	CONS
LEASING	<ul style="list-style-type: none"> • Lower monthly payments • Choice of make/model • Most economical option • Only pay for depreciation • Manufacturer's warranty • No hassle of selling car 	<ul style="list-style-type: none"> • 12-36 month term • Insurance is separate • Initial payment • Limited miles • Early termination fees
RENTAL	<ul style="list-style-type: none"> • Flexible terms • Available immediately • Ideal for shorter durations • No early return penalties • Includes insurance • Direct Billing Service 	<ul style="list-style-type: none"> • Higher monthly payments • No choice of make/model

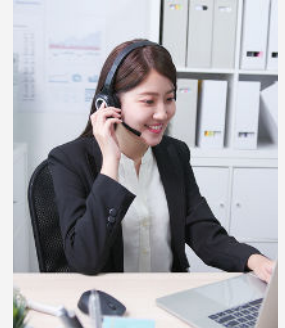


At ExpatRide, we have years of experience with mobility and relocation support solutions for international assignees. On our www.ExpatRide.com blog and social media platforms, we share our experiences, news, and guidelines to support assignees' transportation needs.

An Essential Checklist for Leasing a Car as an Expat

7 Helpful Tips for Leasing a Car Overseas! Securing a car is usually one of the top priorities when relocating to a new country. For most foreign professionals on a two-to-four-year work assignment, car leasing makes more sense than buying a car outright. In this blog, we share a checklist to help your assignees with their leases.

Read more: www.expatride.com/blog/5916/checklist/r



Global Mobility - Transportation Plan

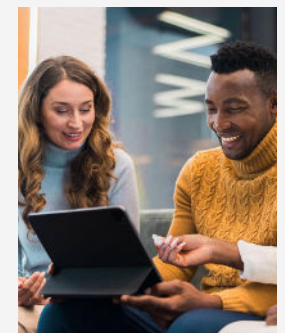
Our Transportation Plan revolutionizes global mobility by streamlining car transportation across continents. Developed in collaboration with clients and partners, it considers budgets, allowances, approved vehicles, and tailored solutions. Our plan covers airport transfers, rental cars, chauffeur services, expat car leasing, and armored vehicles implemented across 200+ locations on six continents.

Read more: www.expatride.com/blog/4392/global-mobility-transportation-plan/

Plan Your Job Network Success Abroad

When moving abroad, create a strong job network in your new location by tapping into your countrymen for valuable local connections. Follow the 100-day plan: listing local organizations, attending events, and connecting on LinkedIn. In the second month, focus on building relationships; in the third month, follow up with your contacts. Success awaits with a solid job network abroad.

Read more: www.expatride.com/blog/4613/plan-your-job-success-before-the-move/



Connect With Us



www.facebook.com/expatride



www.linkedin.com/company/expatride



www.instagram.com/expatride



www.expatride.com